

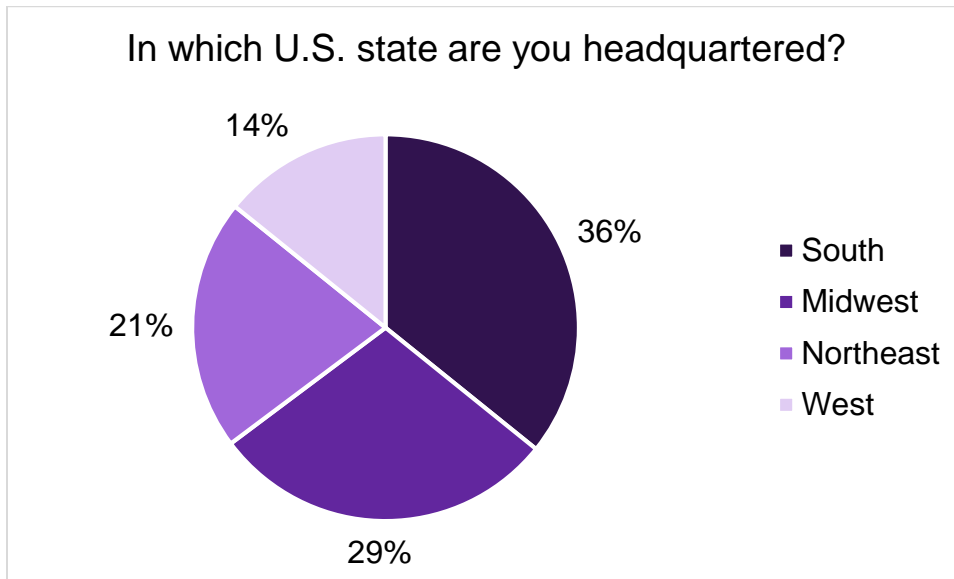
GREEN INITIATIVES

ZIEGLER CFO HOTLINESM

In February 2023, a *Ziegler CFO HotlineSM* survey gathered feedback on green initiatives among senior living organizations.

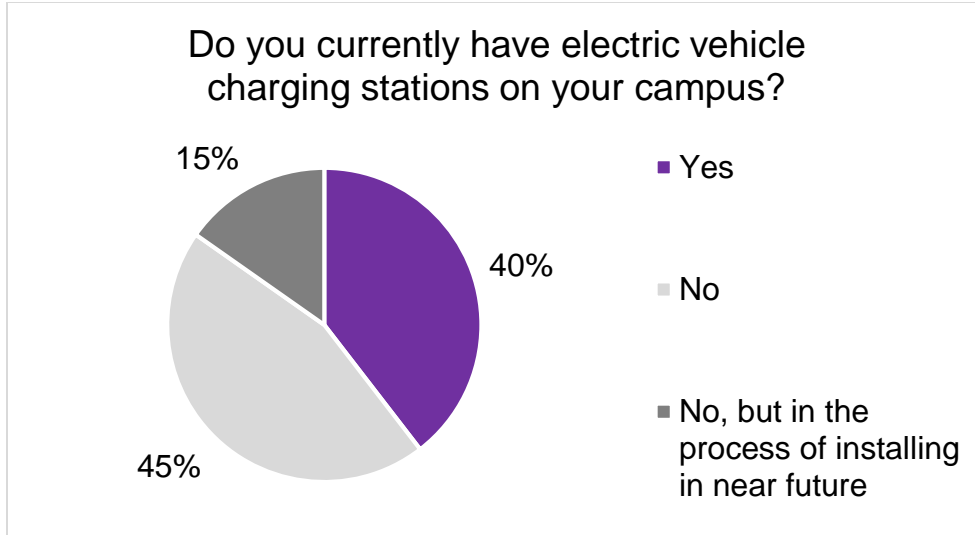
Nearly 180 organizations participated in this survey. About 67% of respondents represented single-site organizations and the remaining 33% represented multi-site organizations.

Respondents were first asked where their primary headquarters were located, in order to clarify the areas (as defined by U.S. Census regions) being surveyed. For this survey, the southern states were most highly represented, at 36%. See the chart below for details.



Electric Vehicles/Charging Stations

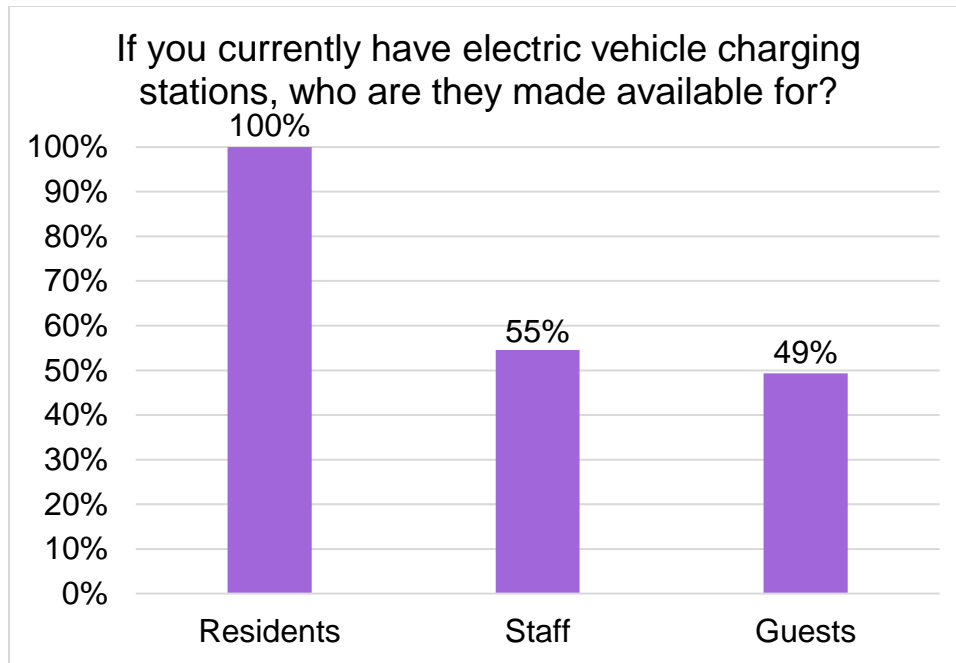
The first section of the survey asked several questions regarding electric vehicles and their charging stations. As shown in the chart below, a full 40% of respondents indicated their campuses feature charging stations, with an additional 15% in the process of installing.



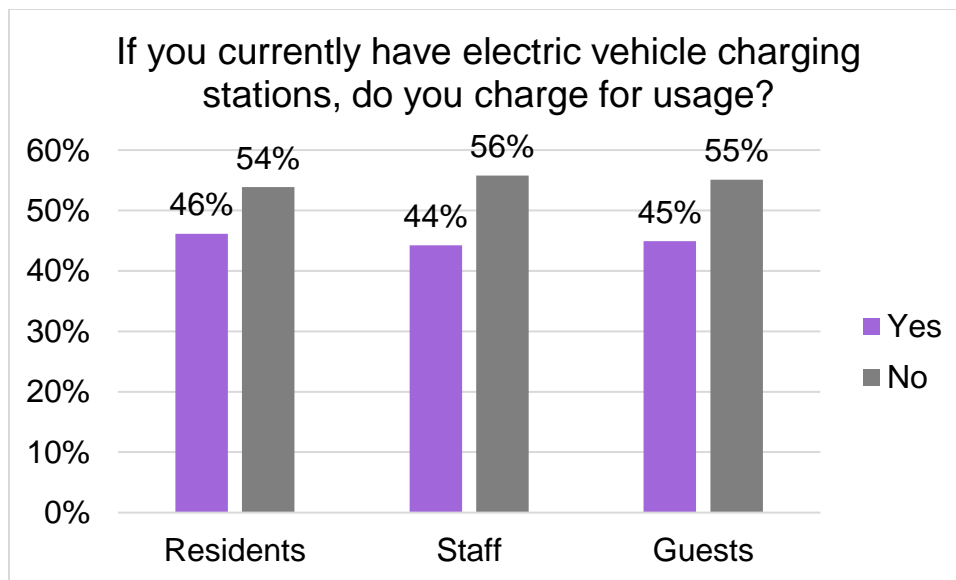
A number of respondents who represent multi-site communities have electric vehicle charging stations on some of their campuses but not others. Multi-sites who have these stations on at least one campus have stations at an average of 59% of their campuses. See a statistical breakdown in the following table.

If you represent a multi-site organization AND answered "Yes" to the question above, what percentage of your communities have charging stations?			
Min	Average	Median	Max
10%	59%	50%	100%

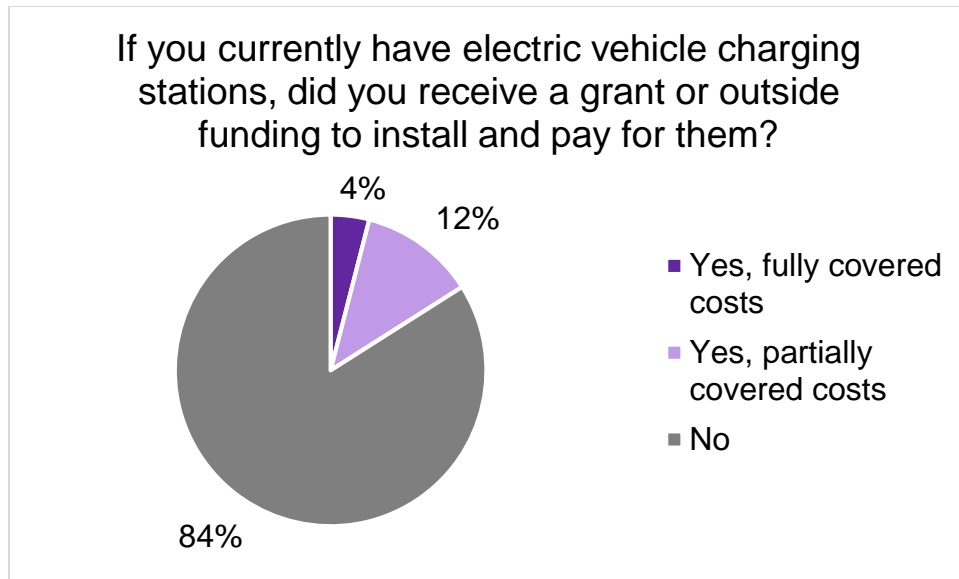
Of the communities (both single-site and multi-site) who have electric vehicle charging stations, the availability across various stakeholder groups varies. While all communities with charging stations make them available to residents, only about half offer the same to staff or guests. See the breakdown below.



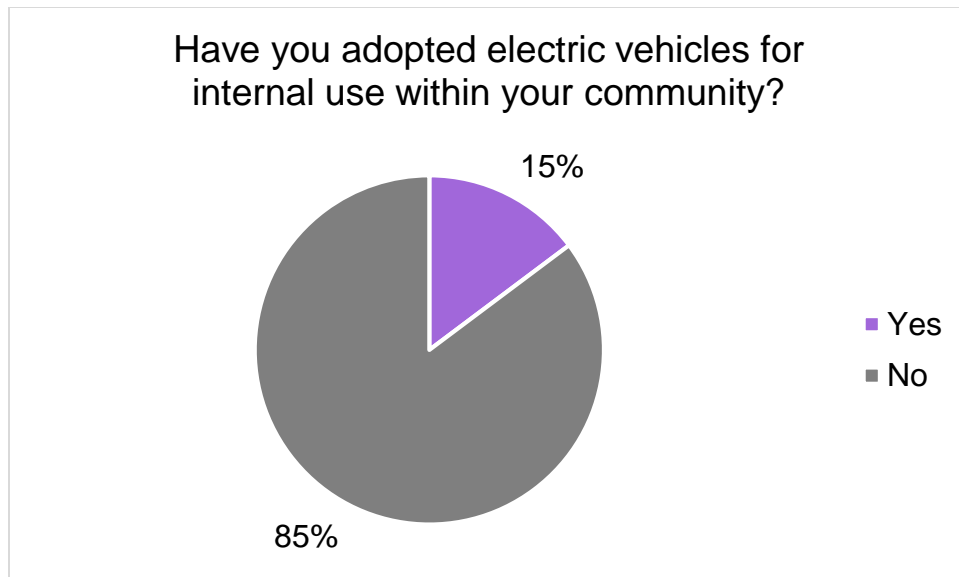
Slightly more than half of the communities with electric vehicle charging stations (roughly 55%) do not charge residents, staff, nor guests for use, while the remaining ~45% do.



When asked whether they had assistance from the outside while funding their electric vehicle charging stations, the majority of communities with these stations said they did not. However, 16% of respondents had full or partial coverage from grants or other funding. See the breakdown below.

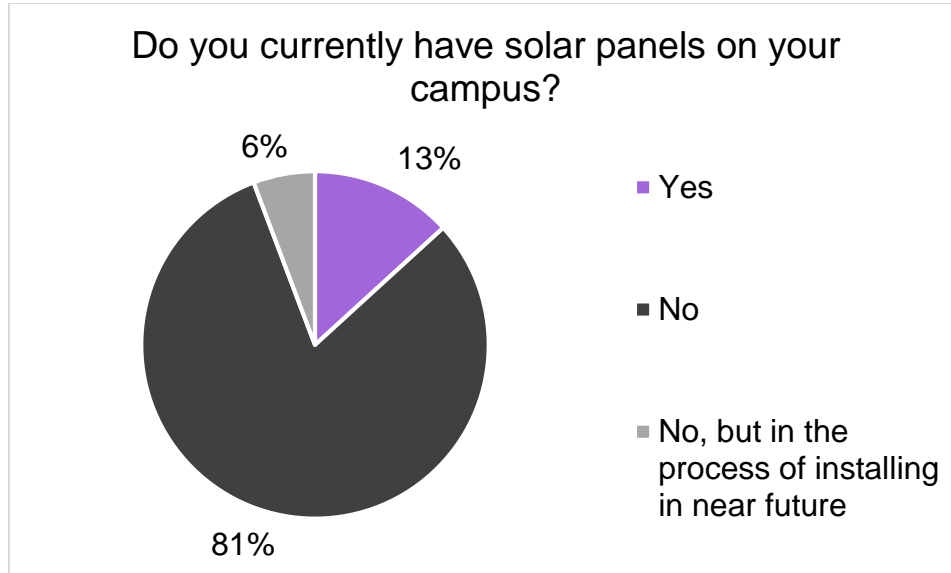


Note that a community may have charging stations for electric vehicles without using electric vehicles among their own fleet (e.g. transportation, other community-owned vehicles). In fact, while 40% have charging stations now (and a total of 55% will in the near future) only 15% of the respondents polled indicated their community uses electric vehicles internally.



Solar Panels

There were two survey questions related to the use of solar panels on campus. The chart below displays how the majority of communities do not currently have this technology, but nearly 20% either do, or are in the process of installing soon.

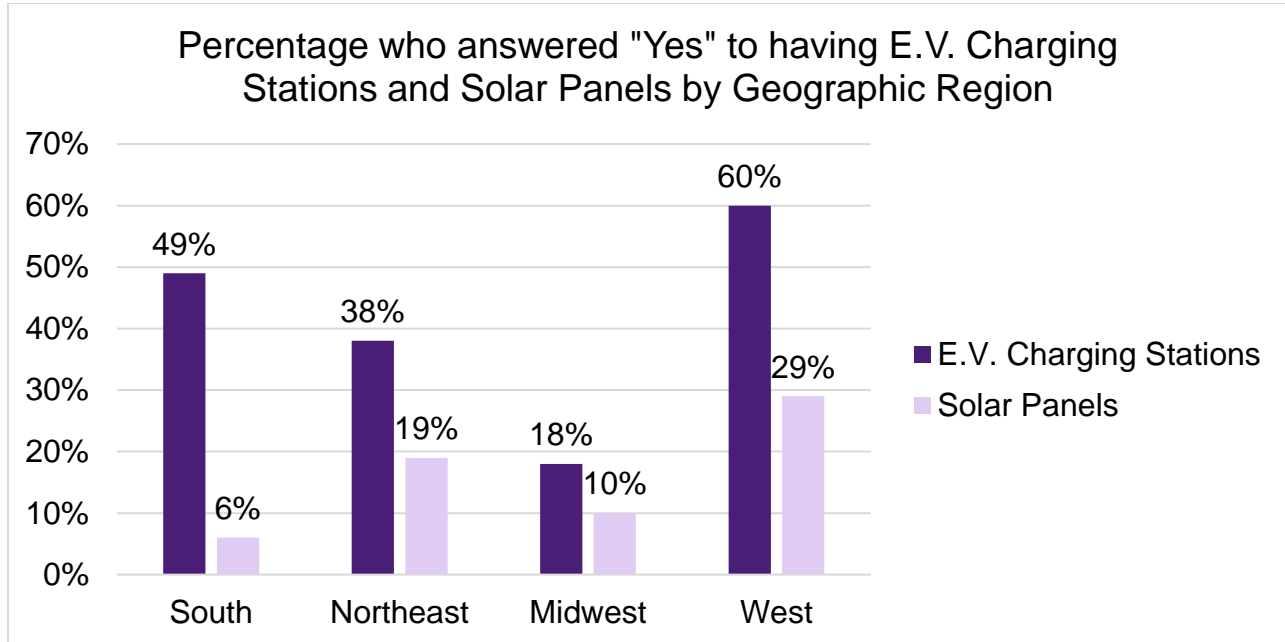


Of multi-site communities that answered “yes” to the question above, they have solar panels installed in an average of 36% of their communities. See the following table for a full statistical breakdown.

If you represent a multi-site organization AND answered "Yes" to the question above, what percentage of your communities have solar panels?

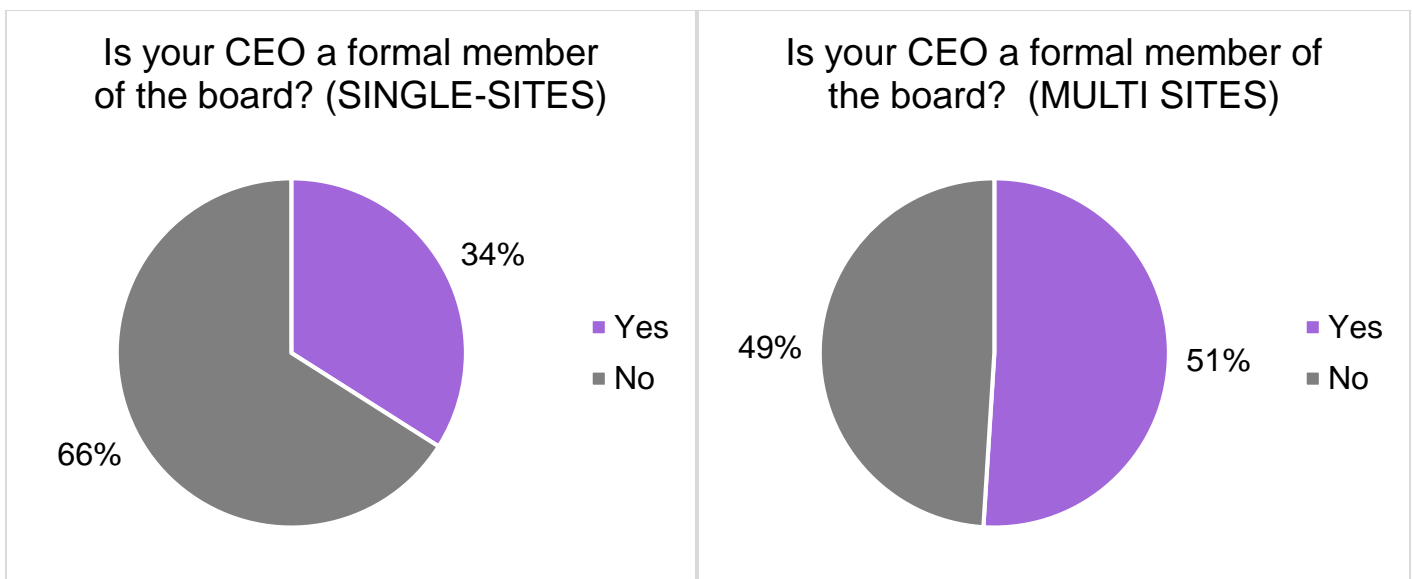
Min	Average	Median	Max
8%	36%	27%	80%

Below is a breakout of the amount of senior living communities who indicated they have electric vehicle charging stations and solar panels, broken out by geographical region. The western states lead the country in both E.V. stations and solar panels. The Midwestern states are least likely to have E.V. stations and the southern states are least likely to have solar panels. See the chart for more detail.



Bonus Question

Starting with the current report and going forward, these surveys will include a random question that is generally unrelated to the theme of the month. Thus the CFO HotlineSM can gather feedback on additional topics suggested by CFOs that may not necessarily require a full survey devoted to that topic. This month's question regarded CEOs' board participation. About a third of single-site communities indicated their CEO is a member of the board, while multi-sites were split nearly 50/50. See the charts below for details.



Open-Ended Response

Lastly, the survey allowed for open-ended comments to be made. Below is a sampling of those comments, which may be edited for length or minor grammatical changes.

- *We purchased reusable containers for our 'to go' dining orders and our residents return the container to be washed through our commercial dishwasher and then reused. Tremendous savings in paper/plastic disposable container costs. Our residents have embraced this program. Added capability for recycling paper and more types of recyclable plastics.*
- *LEED and WELL building certifications.*
- *We currently have limited electric vehicle charging stations and minimal solar, we are expanding both of these in the next 12 months. We are also looking into replacing gas ranges with induction ranges.*
- *Composting pilot under way.*
- *Recycling, Composting, Electricity management, new energy efficient appliances when replaced, removing non-biodegradable packaging. Roof-top solar panels online last year. Native plant species for water usage.*
- *We are currently looking into solar options.*
- *At many communities we have begun moving to drought tolerant landscapes and water wise irrigation systems.*
- *About 95% of our IL apartments and our newest PC building have geothermal heat/AC.*
- *Other initiatives include recycling, composting, LED conversions, reusable to-go containers in dining, and electric/demand load shedding.*
- *Still looking into solar and to add more electric vehicle charging stations. We have received a rebate from local electric company for installing energy efficient lightbulbs and have taken efforts to reduce water consumption by xeriscaping areas of campus.*
- *We do not utilize EVs in the true sense, but we do use golf carts around our campus for a lot of the maintenance staff.*
- *Our solar project provides about 30% of our total electric needs, and it includes a battery so we keep all the power we generate. We also have water gardens to filter and retain rain water.*
- *We recently hired a VP of Sustainability and our board is committed to moving forward with many green initiatives.*

The senior living organizations' responses included in this report have been collated without verification of the accuracy of the data/comments therein. The results provided do not express an opinion of nor can they be guaranteed by Ziegler.

PREPARED BY:

LILY LUDWIG

Research Assistant, Senior Living Research

Ziegler

lludwig@ziegler.com